

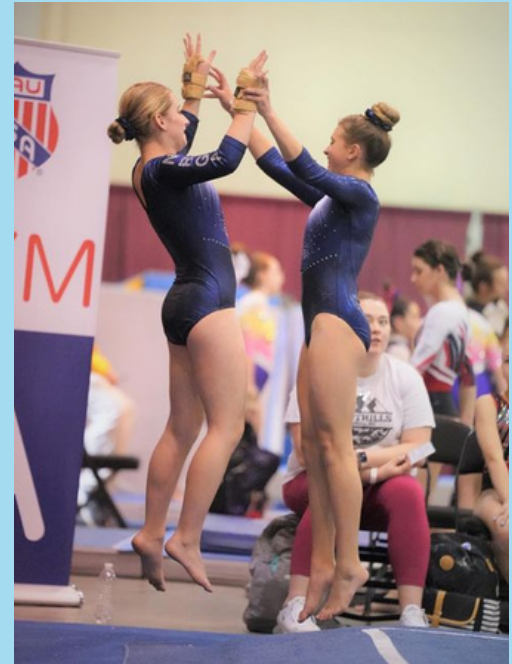
# WELCOME TO NEW RIVER GYMNASTICS!

*newrivergymnasticsacademy.com*

*nrgaboone@gmail.com*

## DROP OFF/ PICK UP

- Please do not park in reserved/marked coach spaces in the grass area on the right side of the building.
- Please stay with your gymnast until class starts. If you are dropping them off, please drop them off only a couple of minutes before class begins.
- Shoes and other items can be left in the first lobby cubbies. Please do not bring anything valuable.
- We **highly encourage** and ask parents to come inside to pick up their gymnasts at the end of class or wait outside at the stairs. This will make pickup safer and quicker for you and the staff.



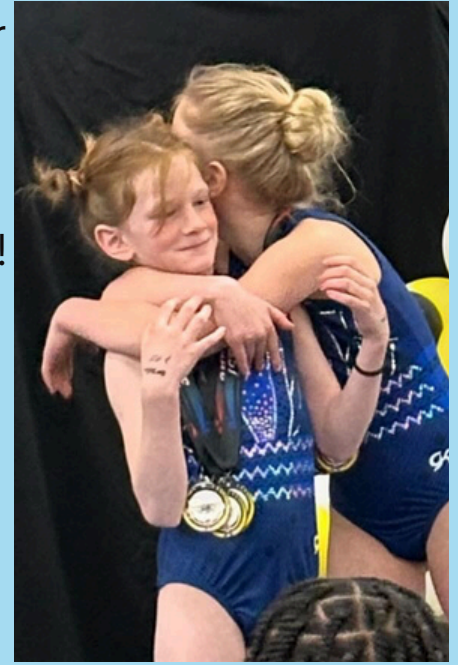
## WHAT TO WEAR & BRING

- We recommend students wear a leotard with or without leggings/shorts OR tight fitting athletic attire and have their hair pulled back out of their face.
- Please do not wear ballet skirts, loose clothing, jeans, dangling jewelry, or loose hair. These can all be safety hazards and the Coach can limit their participation as they see accordingly.
- Students will go barefoot. Socks may be worn if preferred, but they can also limit participation. Shoes may be worn by tumbling classes only and must be clean soled.
- We recommend bringing a water bottle, but there is also a water fountain.



## **UPDATES**

- Our Website, Instagram, and Facebook page are always updated with important information like weather closings (we ONLY post if we DELAY or CLOSE), tuition info, holiday closings, newsletters, etc. If you do not see any updates and have not received an email from us, you can safely assume we are operating as normal!!
- We send out a monthly email with important news about one week prior to the 25th to remind you of the tuition due date and the next month's news.
- Our Rules and Policies document is on our main page of the website and covers everything for our gym operations. If you are unable to find an answer on the website or there, please let us know.



## **TUITION**



- Always due on the 25th of the current month to stay enrolled in the upcoming month and avoid a \$10 late fee.
- Auto Class Withdraw occurs on the last day of the month if you have not paid for the next month.
- Payment options include: Venmo (@nrgaboone), cash and check.
- Regular Monthly Tuition is typically \$80 for 1 class a week or \$120 for 2 classes a week per gymnast.
- Discounts only apply to ON TIME payments. There is a \$10 sibling discount and a \$5 cash/check discount.
- The annual \$35 membership fee is due with your initial payment. There is not a cash/check discount for this payment.

## **SCHEDULED CLOSINGS**

- March 10th-16th (ASU's Spring Break)
- April 19th (Easter Break)
- Last Day of Classes = May 10th

\*\*Carefully planned so every student has 15 classes this semester